

# LEM | S81

Shin & Tomoko Azumi | 2000



# LEM

Shin & Tomoko Azumi | 2000

In 1969, man landed on the moon aboard the LEM, Lunar Excursion Module. In 2000, at the turn of the millennium, the LEM stool was born, one of the symbols of Lapalma's style. The same lightness, the same absence of gravity that in the void created by the design stimulates the relationship with the environment. And just as Apollo 11 could not bear unnecessary weight, so this extraordinary seat has enclosed every function in a minimal and elegant profile. Only the essentials, the rest remained on Earth. Available in height-adjustable, self-aligning and fixed stool versions, indoor and outdoor, it is now produced as a capsule collection in three new galvanic finishes, in brushed black, blue and green, which add to the already wide range of available options. Ideal both for life around the kitchen and for reception areas, bars and restaurants.

Product selected for the Quick Ship program, [download the PDF](#)



# LEM

Shin & Tomoko Azumi | 2000

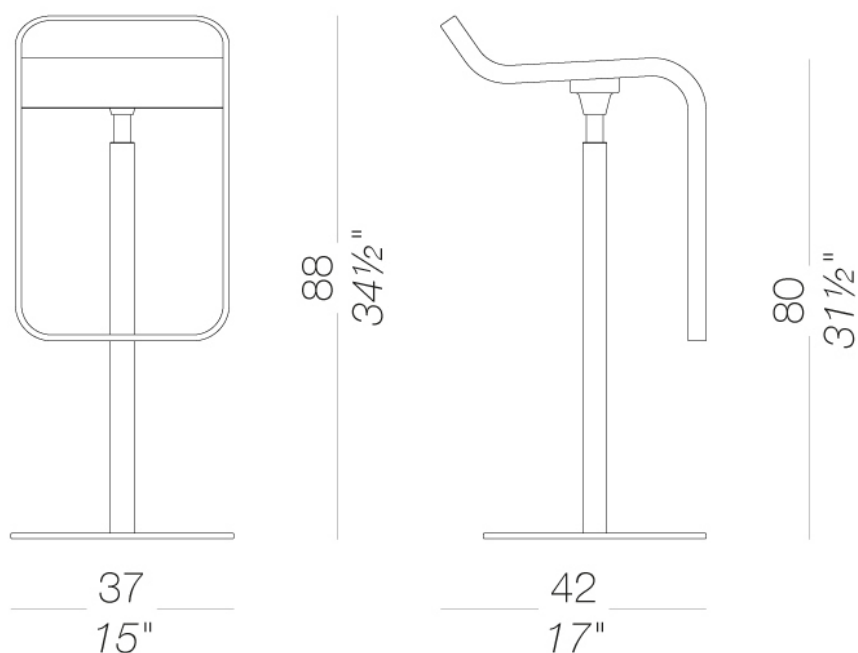


## | S81 Stool H80

Stool with fix height, swivel seat with metal frame mat chromed and base covered by a stainless steel sheet Aisi304 "linen fabric" pattern or entirely powder coated. Seat in plywood in several finishes. Felt under the base. Also available with self-return mechanism.

TEST EN 1728:2000 6.2.1-6.2.2 - EN 15373:2007 - L3 severe  
TEST DIN 68 877/81 5.6

TEST 1 IM - Valencia



# LEM | S81

Shin & Tomoko Azumi | 2000

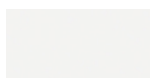
## frame



powder coating  
pistacchio  
1 Colors



powder coating  
black  
1 Colors



powder coating  
white  
1 Colors



powder coating  
perla  
1 Colors



powder coating  
celeste  
1 Colors



powder coating  
mattone  
1 Colors



powder coating  
oliva  
1 Colors



powder coating  
tortora  
1 Colors

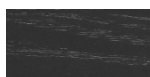


metal  
mat chromed  
1 Colors

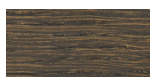
## seat



wood  
blanch oak  
1 Colors



wood  
black open pore  
1 Colors



wood  
oak dark walnut  
1 Colors



lacquered  
lacquered  
8 Colors



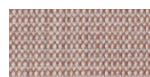
laminate  
fenix 9/10  
2 Colors



metal  
stainless steel  
1 Colors



fabric  
Hallingdal 65 - Grade  
C  
58 Colors



fabric  
Canvas 2 - Grade C  
45 Colors



fabric  
Steelcut Trio 3 -  
Grade D  
54 Colors



fabric  
Remix 3 - Grade C  
72 Colors



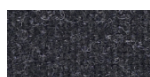
fabric  
Fiord 2 - Grade C  
39 Colors



fabric  
Divina MD - Grade D  
27 Colors



fabric  
Divina Melange 3 -  
Grade D  
38 Colors



fabric  
Tonica 2 - Grade C  
39 Colors



fabric  
Medley - Grade A  
37 Colors



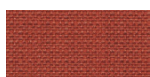
fabric  
Maya - Grade A  
43 Colors



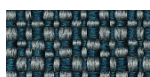
fabric  
Jet - Grade A  
66 Colors



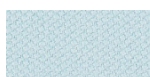
fabric  
Capture - Grade B  
60 Colors



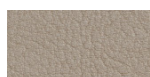
fabric  
Crisp - Grade B  
40 Colors



fabric  
Iris - Grade B  
34 Colors



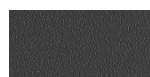
fabric  
Steelcut 3 - Grade D  
40 Colors



ecoleather  
Valencia - Grade B  
72 Colors



leather  
leather  
7 Colors



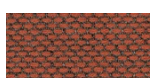
plastics  
grey polyurethane  
1 Colors



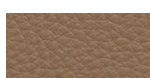
plastics  
black polyurethane  
1 Colors



fabric  
Grain - Grade. B  
50 Colors



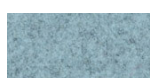
fabric  
Re-wool - Grade C  
24 Colors



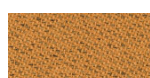
soft-leather  
Soft-leather  
17 Colors



fabric  
Main Line Flax -  
Grade. B  
57 Colors



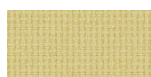
fabric  
Blazer - Grade. C  
77 Colors



fabric  
Chili - Grade. A  
47 Colors



fabric  
Umber - Grade. B  
36 Colors



fabric  
Nobel - Grade. C  
31 Colors



fabric  
Navelli - Grade. C  
24 Colors



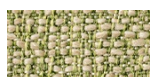
fabric  
Fiocco - Grade. B  
24 Colors



fabric  
Atrium - Grade. C  
16 Colors



fabric  
Panama - Grade. A  
48 Colors



fabric  
Sorrento - Grade. B  
22 Colors

consult the portfolio for the range of colors, fabrics, eco-leather, soft-leather.

## use and maintenance instructions

Clean all parts in wood, leather, fabric and metal with a damp cloth or a diluted neutral cleaner. Do not use cleaners with alcohol, bleach, solvent or abrasive products. Any liquid spilt on the product must be wiped up immediately. When lifting or moving the product, hold it on the structure and not under the seat. The product should not be subjected to unbalanced weights, as it is designed for a proper rest on the foothold (on four legs or on the base). Our company relieves from any responsibility in case of damage caused to fragile floors. Avoid any improper use of the product: do not step on the product, on the footrest or on the armrests. Avoid any movements that could compromise the proper functionality of the product or the safety of the users. Wood and leather, being natural materials, could be easily damaged. Small impurities or imperfections are within quality standard range. Do not expose the product to weather conditions or atmospheric agents, nor to heat sources over 40°C. Also products for outdoor use could be afflicted by atmospheric agents. The product could undergo possible exterior changes due to particular exposure to heat, humidity and saltiness. An appropriate and frequent maintenance and cleaning of the product enhances its durability. The product could change colour and shade, if exposed to direct sunlight. Maintenance has to be carried out by experienced staff. Dispose of the package only after assembling the product, in order to avoid the loss of ironmongery and components. Once the product has been dismantled, the product itself or its components must be given to the public garbage disposal system, according to the legislation in force.

# LEM | S81

Shin & Tomoko Azumi | 2000

**consult the portfolio for the range of colors, fabrics, eco-leather, soft-leather.**

## **use and maintenance instructions**

Clean all parts in wood, leather, fabric and metal with a damp cloth or a diluted neutral cleaner. Do not use cleaners with alcohol, bleach, solvent or abrasive products. Any liquid spilt on the product must be wiped up immediately. When lifting or moving the product, hold it on the structure and not under the seat. The product should not be subjected to unbalanced weights, as it is designed for a proper rest on the foothold (on four legs or on the base). Our company relieves from any responsibility in case of damage caused to fragile floors. Avoid any improper use of the product: do not step on the product, on the footrest or on the armrests. Avoid any movements that could compromise the proper functionality of the product or the safety of the users. Wood and leather, being natural materials, could be easily damaged. Small impurities or imperfections are within quality standard range. Do not expose the product to weather conditions or atmospheric agents, nor to heat sources over 40°C. Also products for outdoor use could be afflicted by atmospheric agents. The product could undergo possible exterior changes due to particular exposure to heat, humidity and saltiness. An appropriate and frequent maintenance and cleaning of the product enhances its durability. The product could change colour and shade, if exposed to direct sunlight. Maintenance has to be carried out by experienced staff. Dispose of the package only after assembling the product, in order to avoid the loss of ironmongery and components. Once the product has been dismantled, the product itself or its components must be given to the public garbage disposal system, according to the legislation in force.